

## TUBULAR STAND & CABINET BASE

QUEST Model EST & ESA



The 1 $\frac{5}{8}$ " SS tubular legs with adjustable feet are welded to the frame and under shelf to provide a sturdy and stable platform. Tubular stands are for free standing units only and cannot be used in conjunction with ovens or refrigerated bases.

### Product Features

- Available in 6" (153) multiples from 12" to 84"
- All stainless steel
- All welded construction
- Modular design is compatible with the Chef Centre

### Optional Features

- SS top
- Casters (fixed and adjustable height)
- Tubular frame in lieu of shelf

All stainless steel construction with single or intermediate shelf options. Width available in 6" (153) multiples. Optional hinged doors (Model ESH) are available.

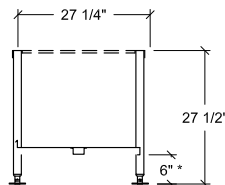
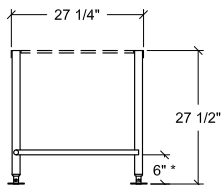
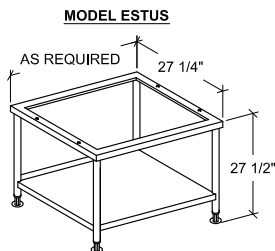
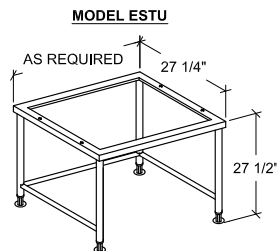
### Product Features

- Available in 6" (153) multiples from 12" to 84"
- All stainless steel
- All welded construction
- Modular design is compatible with the Chef Centre

### Optional Features

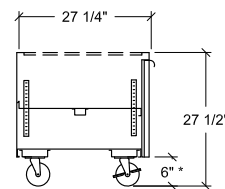
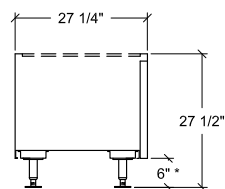
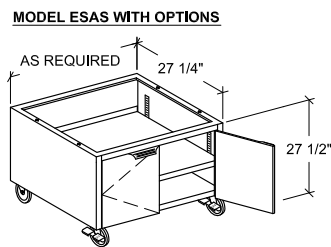
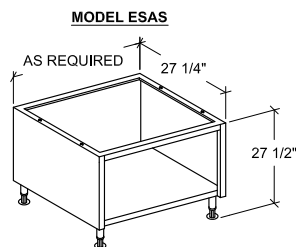
- SS top
- Casters (fixed and adjustable height)
- Hinged doors
- Intermediate shelf

# Quest- Tubular Stand & Cabinet Base



END ELEVATION

END ELEVATION



END ELEVATION

END ELEVATION

\* CASTERS OR ADJUSTABLE LEGS



MODEL	DIMENSIONS (mm)			SHIPPING WEIGHT	
	WIDTH	DEPTH	HEIGHT	LBS	KGS
EST 12 & ESA 12 & ESH 12	12" (305)	27 1/4" (692)	27 1/2" (699)	50	23
EST 18 & ESA 18 & ESH 18	18" (457)	27 1/4" (692)	27 1/2" (699)	60	27
EST 24 & ESA 24 & ESH 24	24" (609)	27 1/4" (692)	27 1/2" (699)	70	32
EST 30 & ESA 30 & ESH 30	30" (762)	27 1/4" (692)	27 1/2" (699)	80	36
EST 36 & ESA 36 & ESH 36	36" (914)	27 1/4" (692)	27 1/2" (699)	90	41
EST 42 & ESA 42 & ESH 42	42" (1067)	27 1/4" (692)	27 1/2" (699)	100	45
EST 48 & ESA 48 & ESH 48	48" (1219)	27 1/4" (692)	27 1/2" (699)	110	50
EST 54 & ESA 54 & ESH 54	54" (1372)	27 1/4" (692)	27 1/2" (699)	120	54
EST 60 & ESA 60 & ESH 60	60" (1524)	27 1/4" (692)	27 1/2" (699)	130	59
EST 66 & ESA 66 & ESH 66	66" (1676)	27 1/4" (692)	27 1/2" (699)	140	64
EST 72 & ESA 72 & ESH 72	72" (1829)	27 1/4" (692)	27 1/2" (699)	150	68
EST 78 & ESA 78 & ESH 78	78" (1981)	27 1/4" (692)	27 1/2" (699)	160	73
EST 84 & ESA 84 & ESH 84	84" (2134)	27 1/4" (692)	27 1/2" (699)	170	77

**NOTE:** Dimensions are accurate at time of publication but subject to change without notice. If sizes are critical, consult the factory.



**QUEST Metal Products Limited**  
 889 Erin St, Winnipeg, MB R3G 2W6  
 Tel: 204.786.2403 Fax: 204.783.7598  
 Email: sales@questmp.ca

**Distributed in Canada by:**  
 Russell Food Equipment Ltd.  
[russellfood.ca](http://russellfood.ca)