

MODULAR CHAR BROILER

QUEST Model QGMB

Stainless steel radiant design provides fast warm-up and even heat, producing that perfect charbroiled flavour and appearance without charcoal. All stainless steel construction eliminates corrosion for long life, easy maintenance and cleaning. Sloping grid reduces flare-up, increases cooking flexibility and is available in rod or cast grid configurations. This is a high performance broiler, with stainless steel front and sides, seamless liner, splashguards and heavy-duty cast iron burners.



QGMB 36
MODEL ILLUSTRATED

Product Features

- Range matching: low profile/modular design
- Stainless steel radiant baffles: charbroiled flavour and appearance without charcoal
- High performance: hotter than competitive broilers
- Easy tilt grid: minimizes flare-ups and increases cooking flexibility
- Dismantles easily for cleaning

Optional Features

- Cast iron top grates
- Diamond shaped top grates
- Model QBD (low profile) version
- Front condiment rail, plating shelf or "Belly Bar"
- Knob guards
- Flexible gas connector kit
- Adjustable counter legs
- Backs 6" (152), 10" (254) or 17" (432) high

Choose the perfect type of optional base for your Quest Broiler to suit your needs: (See separate catalog pages)



Model EST
SS Tubular Stand (with or without shelf)



Model ESA
SS Cabinet Base (with or without doors)



Model QRB
Refrigerated Drawer Base



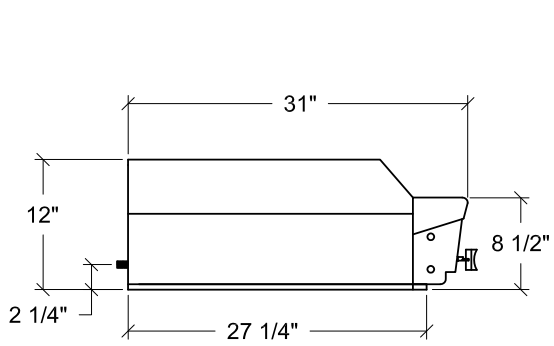
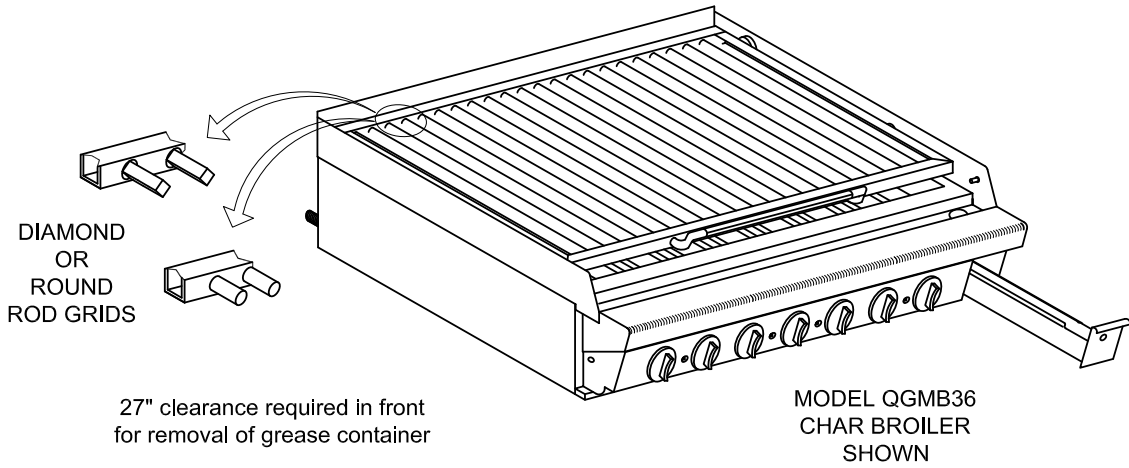
Model QGRO & QGCO
Standard and Convection Oven

"The Quest for the Best Ends at Quest"

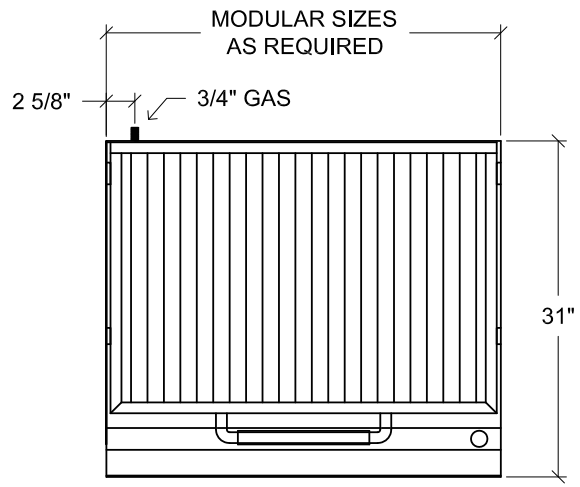
questmetal.com

Quest

Quest- Modular Char Broiler



3/4" REAR GAS CONNECTION,
REGULATOR REQUIRED FOR NAT. GAS,
SUPPLIED LOOSE, SET AT 3.5 W.C.



MODEL	WIDTH (mm)	DEPTH (mm)	BODY HEIGHT (mm)	BTU'S	GAS LINE	GRID SIZE		SHIPPING WEIGHT	
						SQ IN	SQ CM	LBS	KGS
QGMB-12	12" (305)	31" (790)	8 1/2" (216)	30,000	3/4" (19)	264	1700	125	57
QGMB-18	18" (460)	31" (790)	8 1/2" (216)	45,000	3/4" (19)	408	2630	165	75
QGMB-24	24" (610)	31" (790)	8 1/2" (216)	60,000	3/4" (19)	552	3560	205	90
QGMB-30	30" (765)	31" (790)	8 1/2" (216)	75,000	3/4" (19)	696	4490	245	110
QGMB-36	36" (915)	31" (790)	8 1/2" (216)	105,000	3/4" (19)	840	5420	295	135
QGMB-42	42" (1070)	31" (790)	8 1/2" (216)	120,000	3/4" (19)	960	6190	345	155
QGMB-48	48" (1220)	31" (790)	8 1/2" (216)	150,000	3/4" (19)	1104	7120	385	175

Installation Notes

- Specify natural gas or propane
- Unit requires 6" (150 mm) clearance from combustible walls at back and sides
- 3/4" (19 mm) gas connection at rear (ideal for gas hose connection)
- 27" (685 mm) clearance required in front for removal of grease container



NOTE: Dimensions are accurate at time of publication but subject to change without notice. If sizes are critical consult the factory.



QUEST Metal Products Limited
889 Erin St, Winnipeg, MB R3G 2W6
Tel: 204.786.2403 Fax: 204.783.7598
Email: sales@questmp.ca

Distributed in Canada by:
Russell Food Equipment Ltd.
russellfood.ca