

HOT FOOD TABLE (ELECTRIC) 30 SERIES

QUEST Model RET (30)

Like QUEST's RET (36) model, this product is designed for foods requiring different holding and serving temperatures. Constructed from heavy gauge stainless steel to withstand the rigors of continual operation. The top is formed with 12" x 20" (305 x 508 mm) 18 gauge stainless steel wells reinforced on the underside.



RET-4 (30)
MODEL ILLUSTRATED

Product Features

- Wet or dry well operation
- Individual temperature controls
- One piece stainless top for 100% sanitation
- All stainless steel body, legs and adjustable feet

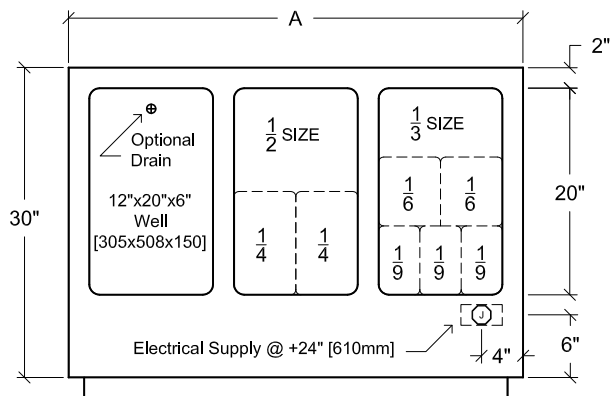
Each Well:

- 12" x 20" (305 x 508)
- Powerful 1200 Watt elements to handle any heating requirement
- Accommodates a variety of standard inserts
- Fully insulated ensuring accurate efficient heating
- Crevice-free and seamless—welded to the table top for the ultimate in sanitation
- Rounded corners for easy cleaning

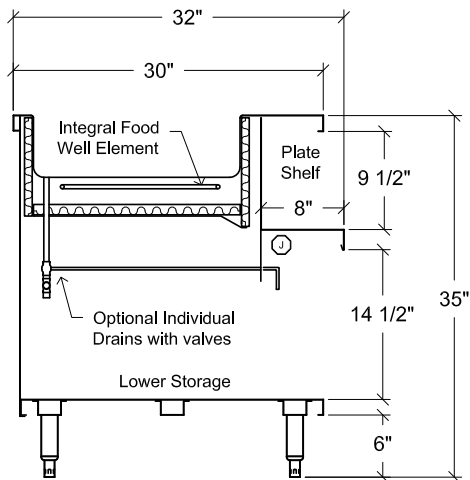
Optional Features

- Server side pick-up shelves 12"w x 32"h (305 x 815)
- Cutting board (polyethylene)
- Roll covers for individual wells
- Adapter plates to accommodate round inserts
- Heated lower storage compartment
- Stainless steel sliding doors for lower storage compartment (heated or non-heated)
- Stainless steel overself
- Sneezeguard
- Drains individually valved and plumbed to common drop
- Manifolded drains to single valve

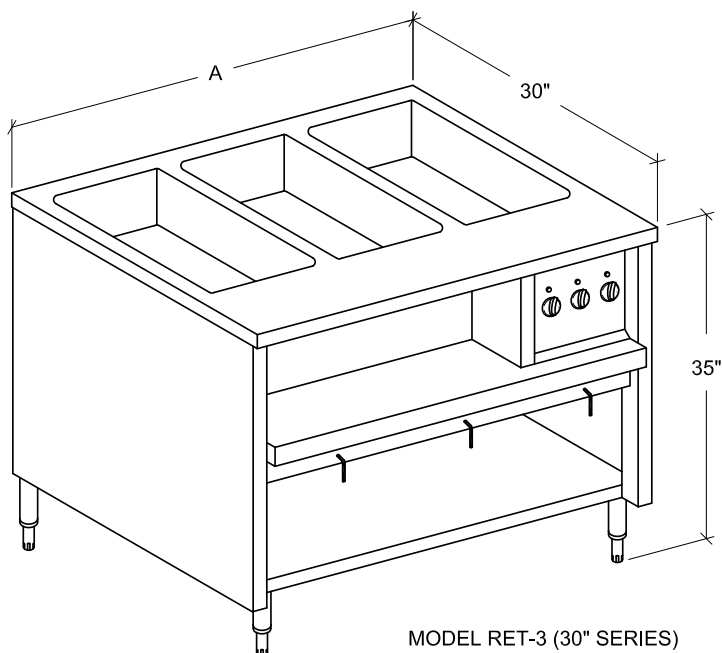
Quest- Hot Food Table (Electric) 30 Series



MODEL RET-3 (30) PLAN



MODEL RET-3 (30) SECTION



MODEL RET-3 (30\"/>

Inserts Not Included

MODEL	DIMENSIONS (mm)			WEIGHT (kgs)		RET- KILOWATTS	
	LENGTH (A)	DEPTH	HEIGHT	NET	SHIPPING	WELLS	STORAGE
RET-3 (30)	44" (1120)	30" (760)	35" (890)	355 (161)	375 (170)	3.6	1.0
RET-4 (30)	58" (1475)	30" (760)	35" (890)	395 (179)	425 (193)	4.8	1.0
RET-5 (30)	72" (1830)	30" (760)	35" (890)	435 (197)	475 (245)	6.0	1.5
RET-6 (30)	86" (2185)	30" (760)	35" (890)	475 (215)	525 (238)	7.2	1.5
RET-7 (30)	100" (2540)	30" (760)	35" (890)	515 (234)	575 (261)	8.4	1.5
RET-8 (30)	114" (2895)	30" (760)	35" (890)	555 (252)	625 (284)	9.6	1.5

NOTE: Dimensions are accurate at time of publication but subject to change without notice. If sizes are critical consult the factory.



QUEST Metal Products Limited
 889 Erin St, Winnipeg, MB R3G 2W6
 Tel: 204.786.2403 Fax: 204.783.7598
 Email: sales@questmp.ca

Distributed in Canada by:
 Russell Food Equipment Ltd.
russellfood.ca