

CONVECTION OVEN

QUEST Model QGCO

The QUEST Convection Oven employs a two-speed fan to circulate hot air around the cavity, which dramatically enhances the baking and roasting process. In general, cooking times are reduced by 25%, and cooking temperatures can be lowered by 50° F, saving energy and reducing shrinkage. Much faster recovery is an added benefit when the oven is used for finishing appetizers on a busy servery line. Supplied with three racks, this oven will also do multi-level baking much more efficiently, without the need to rotate pans.



QGCO 36
MODEL ILLUSTRATED

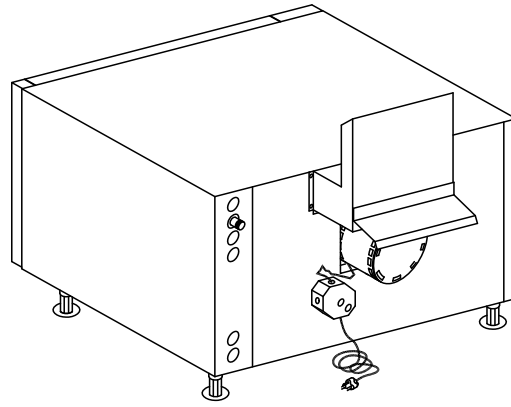
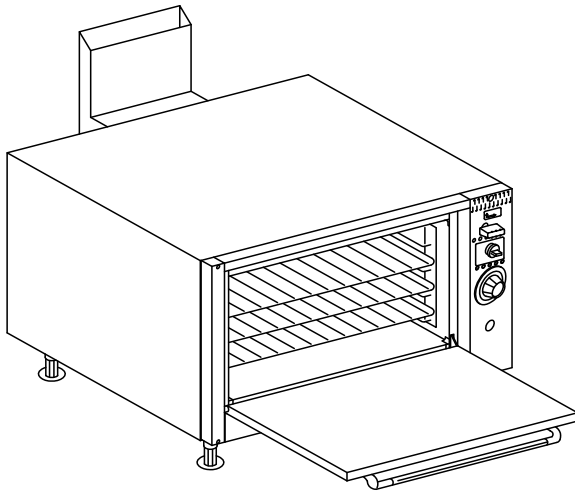
Product Features

- Heavy-duty two-speed motor with high heat SS ball bearings
- SS nonconductive shaft prevents motor damage
- Military quality speed control with cool down feature
- Three oven racks supplied standard
- All SS interior cavity, durable and easy to clean
- Heavy-duty all welded construction
- Counterbalanced door for trouble free and positive closing
- No springs to service or replace
- Oven thermostat with modulating and snap-action control
- SS front and sides for ease of cleaning and appearance
- Available in full size 36" (915) or half size 24" (610)
- SS rotating door handle, cool and ergonomic
- Modular design compatible with Chef Centre

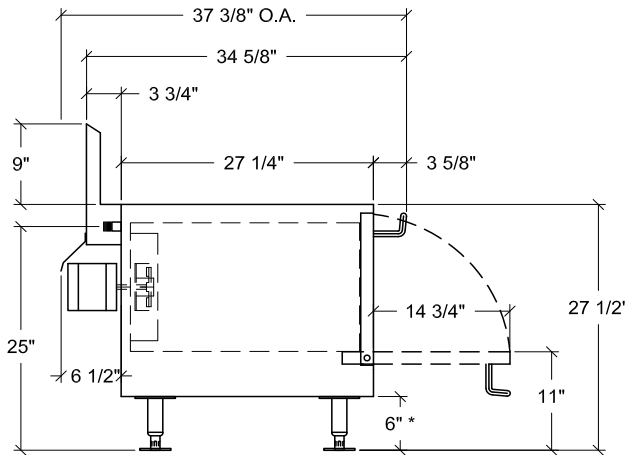
Optional Features

- SS top
- Casters (fixed and adjustable height)
- Flexible gas connector kit
- Heat shield for protection of vinyl floors
- Stacking kit (see Model DDRO)

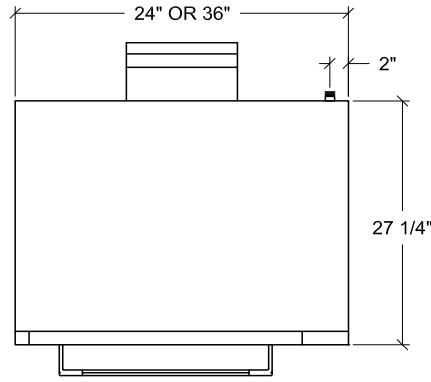
Quest- Convection Oven



MODEL QGCO-36 SHOWN



END ELEVATION



PLAN VIEW

* CASTERS OR ADJUSTABLE LEGS

3/4" REAR GAS CONNECTION,
REGULATOR REQUIRED FOR NAT. GAS,
SUPPLIED LOOSE, SET AT 3.5 W.C.

MODEL	OVERALL EXTERIOR DIMENSIONS (mm)			INTERIOR (USEABLE) DIMENSIONS (mm)			BTU'S	GAS LINE	ELECTRICAL		WEIGHT	
	WIDTH	DEPTH	HEIGHT*	WIDTH	DEPTH	HEIGHT			RATING	CORD & PLUG	LBS.	KGS.
QGCO 24	24" (610)	37 3/8" (949)	27 1/2" (699)	14" (356)	21" (533)	14 3/8" (368)	30,000	3/4" (19)	115V-5 amp	Nema 5-15	300	136
QGCO 36	36" (914)	37 3/8" (949)	27 1/2" (699)	26" (660)	21" (533)	14 3/8" (368)	37,500	3/4" (19)	115V-5 amp	Nema 5-15	330	150

* NOTE: HEIGHT INCLUDES 6" LEGS OR CASTORS



(Optional Labelling)

NOTE: Dimensions are accurate at time of publication but subject to change without notice. If sizes are critical consult the factory.



QUEST Metal Products Limited
889 Erin St, Winnipeg, MB R3G 2W6
Tel: 204.786.2403 Fax: 204.783.7598
Email: sales@questmp.ca

Distributed in Canada by:
Russell Food Equipment Ltd.
russellfood.ca