

BAR UNIT

QUEST Model BAR 36



This standard version of the bar unit is all stainless steel construction (features listed below). The BAR 36 is a popular QUEST design for modular stations. Bar Units are also available in custom sizes and configurations to meet your specific needs.

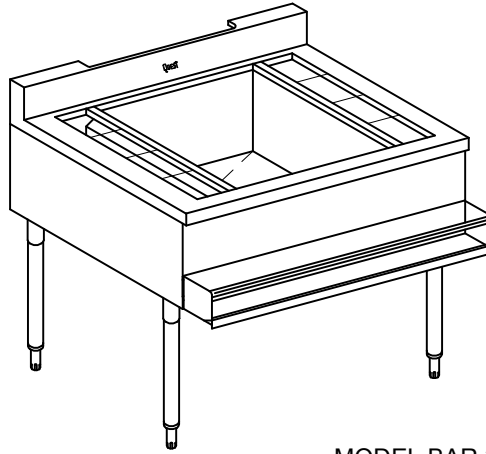
Standard Features

- All welded stainless steel construction
- Integral rear service chase
- 20" x 20" fully insulated ice bin
- Space for 8 rubber bottle holders (sold separately)
- 36" speed rail
- 4" back splash

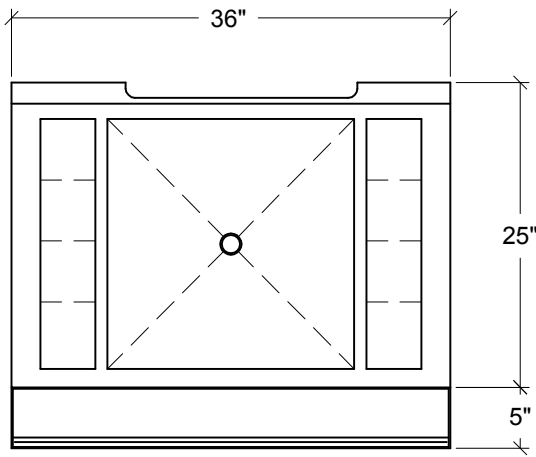
Optional Features

- Rubber bottle holders
- Removable ice bin divider
- Custom lengths
- 18", 24" or 30" speed rail
- Fruit pan holder (top or back splash mount)
- Extras like drop in bottle holder pans (single row or double row)

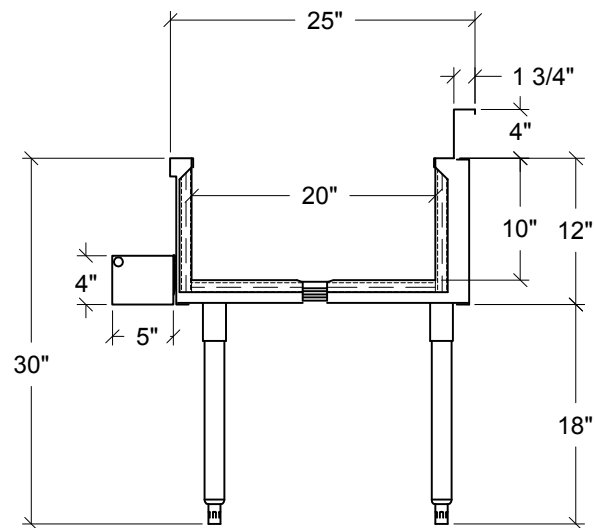
Quest- Bar Unit



MODEL BAR 36 SHOWN



PLAN VIEW



SECTION THRU

- INSULATED 20"x20"x10"D ICE BIN
- REAR SERVICE CHASE
- SPACE TO ACCOMMODATE 8 BOTTLE HOLDERS
- 36" SPEED BOTTLE RAIL

STANDARD BAR UNITS

| MODEL | OVERALL SIZE (mm) | | | SHIPPING WEIGHT | |
|---------------|-------------------|-----------|-----------|-----------------|-----|
| | LENGTH | DEPTH | HEIGHT | LBS | KGS |
| BAR-36 | 36" (914) | 25" (635) | 30" (762) | 125 | 57 |

NOTE: Dimensions are accurate at time of publication but subject to change without notice. If sizes are critical consult the factory.



QUEST Metal Products Limited
 889 Erin St, Winnipeg, MB R3G 2W6
 Tel: 204.786.2403 Fax: 204.783.7598
 Email: sales@questmp.ca

Distributed in Canada by:
 Russell Food Equipment Ltd.
russellfood.ca